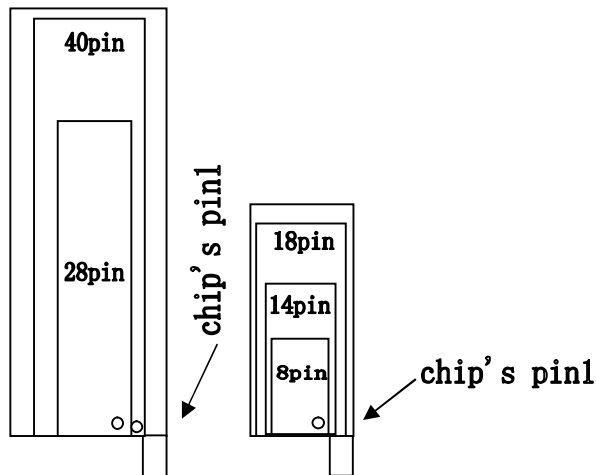


FEZ877_JDM PROGRAMMER User Guide

HARDWARE (Programmer)

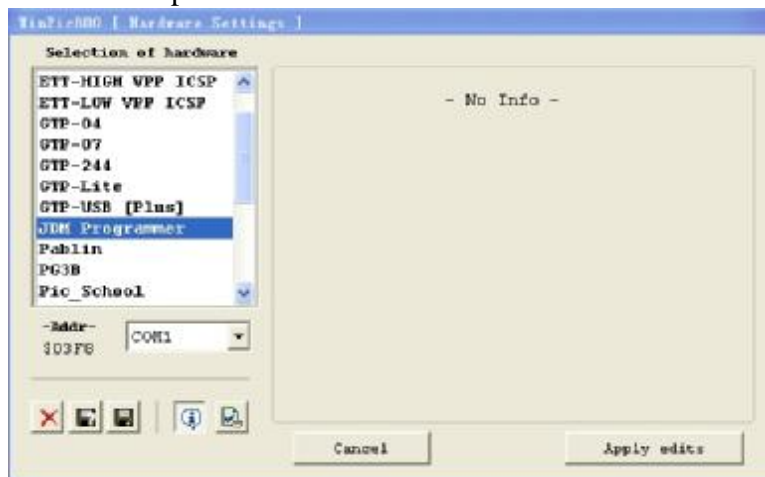
1. Use the Serial Port Cable provided.
2. Connect one side of the cable to the programmer and the other side to the serial port of the computer.
3. Plug in the microcontroller at the socket

CAUTION *The microcontroller should never be plug in the wrong position!*



SOFTWARE (WINPIC800)

1. Download the WinPic800 in website.
 - a. <http://www.pic16.com/soft/winpic800.zip>
 - b. <http://www.winpic800.com//descargas/WinPic800.zip>
2. Install Winpic800.zip.
3. Open the WinPic800 folder and run the WinPic800.exe. (double click on it)
4. **Settings -->Hardware -->select JDM Programmer-->Apply edits .**
Rs232 serial port select **COM1** or **COM2**.



5. Click **File-->Open** to open the program Hex file.
6. Configuration Bits Settings:
7. Click **Device-->Program All** to program the PIC.



Read /Program/Verity/Erase